

**New *Podonta* Solier species (Coleoptera: Tenebrionidae: Alleculinae)  
from the Palaearctic Region**

Vladimír NOVÁK

Nepasické náměstí 796, CZ-190 14 Prague 9 - Klánovice, Czech Republic  
e-mail: alleculinae.vn@centrum.cz

**Taxonomy, new species, new species group, new synonymy, redescriptions, Alleculinae, Cteniopodini, *Podonta*, Palaearctic Region**

**Abstract.** Three new species of the genus *Podonta* Solier, 1835 are described, illustrated and keyed as *Podonta babadagiica* sp. nov. from Turkey, *P. murzini* sp. nov. from Iran and Turkey and *P. pseudoatrata* sp. nov. from Syria. These species as well as the species *Podonta atrata* Kiesenwetter, 1873, *Podonta biformis* Reitter, 1889, *Podonta eckerleini* Muche, 1963, *Podonta frater* Seidlitz, 1896, *Podonta nigrita* (Fabricius, 1794) and *Podonta soror* Seidlitz, 1896 (male with widened ultimate protarsomeres) belong to a presently established *Podonta nigrita* species group. *Podonta dentella* Muche, 1962 is treated after studying of type material as a junior synonym of *Podonta atrata* Kiesenwetter. Redescriptions of *P. nigrita*, *P. frater* and *P. soror* are added.

INTRODUCTION

Solier (1835) described the genus *Podonta* with *Cistela nigrita* Fabricius, 1794 as a type species. Species of this new genus have black, elongate or elongate-oval body, short antennae (not reaching half body length), transverse pronotum, elongate head with insertions of antennae visible from above, distinctly belonging to the tribe Cteniopodini Solier, 1835.

Species of this Palaearctic genus are distributed in the South-Eastern Europe and near Asia. Mader (1928) knew 26 species. New species were described by Mařan (1935) and Muche (1962, 1963 and 1965). Novák & Pettersson (2008) listed 33 species of this genus from the Palaearctic Region.

Male of *Podonta nigrita* (Fabricius, 1794) has ultimate protarsomere distinctly widened, also males of species *Podonta atrata* Kiesenwetter, 1873, *Podonta biformis* Reitter, 1889, *Podonta eckerleini* Muche, 1963, *Podonta frater* Seidlitz, 1896 and *Podonta soror* Seidlitz, 1896.

*Podonta dentella* Muche, 1962 is treated after studying of type material as a junior synonym of *Podonta atrata* Kiesenwetter.

New species with widened ultimate protarsomeres of male are described as *Podonta babadagiica* sp. nov. from Turkey, *Podonta murzini* sp. nov. from Iran and Turkey and *Podonta pseudoatrata* sp. nov. from Syria. All these species, distinctly belonging to newly established *Podonta nigrita* species group, are illustrated and keyed.

Redescriptions of *P. nigrita*, *P. frater* and *P. soror* are added.

## MATERIAL AND METHODS

Two important morphometric characteristics adopted for descriptions of species in the subfamily Alleculinae, the 'ocular index' dorsally (Campbell & Marshall 1964) and 'pronotal index' (Campbell 1965), are used in the present paper as well. The ocular index equals  $(100 \times \text{minimum dorsal distance between eyes}) / (\text{maximum width of head across eyes})$ . The pronotal index is calculated as  $(100 \times \text{length of pronotum along midline}) / (\text{width across basal angles of pronotum})$ .

In the list of type or examined material, a double slash (//) separates data on different labels and a slash (/) data in different lines.

The following codens are used:

APEG private collection of Andreas Pütz, Eisenhüttenstadt, Germany;  
MTDG Staatliches Museum für Tierkunde, Dresden, Germany;  
NMEG Naturkundemuseum, Erfurt, Germany;  
NMPC National Museum, Praha, Czech Republic;  
PZPC private collection of Petr Zahradník, Praha, Czech Republic;  
VNPC private collection of Vladimír Novák, Praha, Czech Republic;  
ZMOC private collection of Zdeněk Malinka, Opava, Czech Republic;  
ZSMG Zoologische Staatssammlung München, Germany.

Measurements of body parts and corresponding abbreviations used in text are as follows: AL - total antennae length; BL - maximum body length; EL - maximum elytral length; EW - maximum elytral width; HL - maximum length of head (visible part); HW - maximum width of head; OI - ocular index dorsally; PI - pronotal index dorsally; PL - maximum pronotal length; PW - pronotal width at base; RLA - ratios of relative lengths of antennomeres 1-11 from base to apex (3=1.00); RL/WA - ratios of length / maximum width of antennomeres 1-11 from base to apex; RLT - ratios of relative lengths of tarsomeres 1-5 respectively 1-4 from base to apex (1=1.00); RL/WP - ratios of length / maximum width of ultimate palpomeres; RL/WUP - ratios of length / maximum width of ultimate protarsomere.

Other abbreviations used in text: bf= black frame; hb= handwritten black; hg= handwritten green; pb= printed black; rl= red label; wl= white label; yl= yellow line.

Measurements were made with Olympus SZ 40 stereoscopic microscope with continuous magnification and with Soft Imaging System AnalySIS.

## TAXONOMY

### KEY TO THE MALES OF *PODONTA NIGRITA* SPECIES GROUP

- A(B) Ultimate protarsomeres of male angular, widened on inner side. ....  
..... *Podonta nigruta* species group ..... 1  
B(A) Ultimate protarsomeres of male narrow or slightly roundly widened. .... other *Podonta* species  
1(2) Ultimate protarsomeres of male distinctly excised in inner side. .... 3  
2(1) Ultimate protarsomeres not excised on inner side, angularly widened from base to apex (sometimes lateral margin slightly arcuate) or broadly widened, with distinct angle on inner side. .... 7  
3(4) Dorsal surface of head and pronotum with denser, larger and coarse punctuation. .... 5  
4(3) Dorsal surface of head and pronotum with sparser smaller and shallow punctuation. Habitus as in Fig. 14, head, pronotum and maxillary palpus (Fig. 15), antenna (Fig. 16), protarsus (Fig. 17), abdomen (Fig. 18), aedeagus (Figs. 19, 20). Armenia, Iran, Iraq, Syria, Turkey. .... *Podonta biformis* Reitter, 1898

- 5(6) Posterior angles of pronotum roundly obtuse, ultimate palpomere roundly widened on inner side, inner tarsal claw of ultimate protarsomere with 9 teeth. Habitus as in Fig. 46, head, pronotum and maxillary palpus (Fig. 47), antenna (Fig. 48), protarsus (Fig. 49), abdomen (Fig. 50), aedeagus (Figs. 51, 52). Syria. .... *Podonta pseudoatrata* sp. nov.
- 6(5) Posterior angles of pronotum roundly rectangular, ultimate palpomere angularly widened on inner side, inner tarsal claw of ultimate protarsomere with 7 teeth. Habitus as in Fig. 1, head, pronotum and maxillary palpus (Fig. 2), antenna (Fig. 3), protarsus (Fig. 4), abdomen (Fig. 5), aedeagus (Figs. 6, 7). Cyprus, Israel, Syria, Turkey. .... *Podonta atrata* Kiesenwetter, 1873
- 7(8) Ultimate protarsomeres of male wider than apex of tibia. .... 9
- 8(7) Ultimate protarsomeres of male as wide as or narrower than apex of tibia. .... 12
- 9(10) Posterior part of head with sparser punctuation, punctures larger and coarser; apical piece of aedeagus apically narrow. Habitus as in Fig. 27, head, pronotum and maxillary palpus (Fig. 28), antenna (Fig. 29), protarsus (Fig. 30), aedeagus (Figs. 31, 32). Turkey. .... *Podonta frater* Seidlitz, 1896
- 10(9) Posterior part of head with denser punctuation, punctures smaller and shallower; apical piece of aedeagus with distinct drop in apex. Habitus as in Fig. 8, head, pronotum and maxillary palpus (Fig. 9), antenna (Fig. 10), protarsus (Fig. 11), aedeagus (Figs. 12, 13). Turkey. .... *Podonta babadagiica* sp. nov.
- 11(12) Larger species, head shorter, clypeus shorter than wide, apex of ultimate protarsomere rounded. .... 13
- 12(11) Smaller species, head longer, clypeus as long as wide, apex of ultimate protarsomere with angle. Habitus as in Fig. 33, head, pronotum and maxillary palpus (Fig. 34), antenna (Fig. 35), protarsus (Fig. 36), aedeagus (Figs. 37, 38). Iran, Turkey. .... *Podonta murzini* sp. nov.
- 13(14) More oval and robust species, protarsomeres 2-4 widened, distinctly wider than mesotarsomeres 2-4. Habitus as in Fig. 39, head, pronotum and maxillary palpus (Fig. 40), antenna (Fig. 41), protarsus (Fig. 42), abdomen (Fig. 43), aedeagus (Figs. 44, 45). Albania, Austria, Bosnia Herzegovina, Bulgaria, Croatia, Czech Republic, Greece, Hungary, Italia, Poland, Romania, Russia, Slovakia, Switzerland, Turkey, Ukraine, Yugoslavia, Caucasus. .... *Podonta nigrita* (Fabricius, 1794)
- 14(13) More elongate species, protarsomeres 2-4 approximately as wide as mesotarsomeres 2-4. .... 15
- 15(16) Ultimate palpomere shorter and wider, anterior margin of pronotum slightly excised. Habitus as in Fig. 21, head, pronotum and maxillary palpus (Fig. 22), antenna (Fig. 23), protarsus (Fig. 24), aedeagus (Figs. 25, 26). Turkey. .... *Podonta eckerleini* Muehe, 1963
- 16(15) Ultimate palpomere longer and narrower, anterior margin of pronotum straight. Habitus as in Fig. 53, head, pronotum and maxillary palpus (Fig. 54), antenna (Fig. 55), protarsus (Fig. 56), aedeagus (Figs. 57, 58). Turkey. .... *Podonta soror* Seidlitz, 1896

### *Podonta atrata* Kiesenwetter, 1873

(Figs. 1-7)

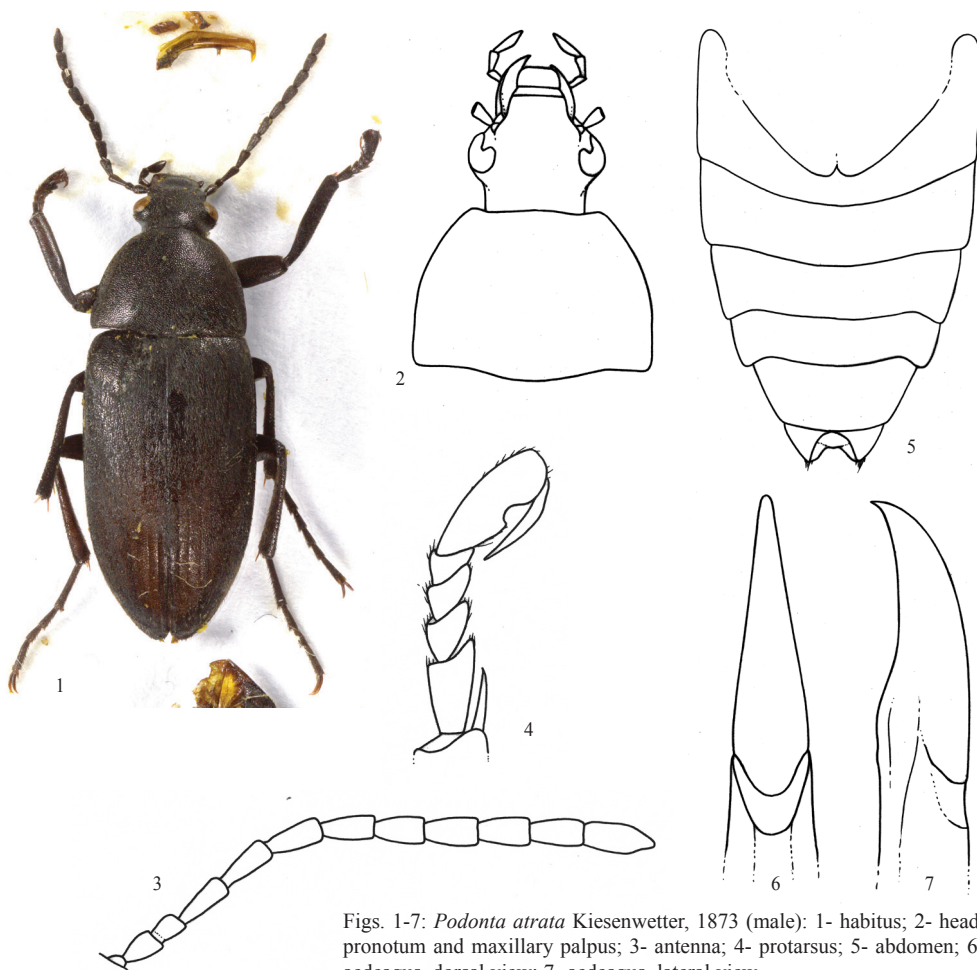
*Podonta atrata* Kiesenwetter, 1873: 15;  
= *Podonta dentella* Muehe, 1962: 145 **syn. nov.**

**Type material.** *Podonta dentella* Muehe, 1962: Paratypes: (1 ♂ with dissected aedeagus): wl: Anatolia - Mai / Gülek - bogazi / leg. Muehe [pb] // wl: *Podonta / dentella / nov.* [hb] / determ. Muehe [pb] // rl: Paratypus [pb], (MTDG); (1 ♂): wl: Anatolia - Mai / Gülek - bogazi / leg. Muehe [pb] // rl with bf: Paratypus [pb] / *Podonta / dentella* [hb] / det. Muehe 19 [pb], (MTDG).

**Type condition.** First type: glued on triangular white label missing left hind leg and right meso- and metatarsus. Second type: glued on white label missing only right hind leg.

**Material examined.** (2 ♂♂): wl: Adana / As. Min. [pb] // wl: *Podonta / atrata* Kiesw. [hb] / Dr. Mařan det. [pb] // wl with bf: *Podonta / atrata / Kiesw.* [hb], (NMPC, VNPC); (1 ♂): wl: Asia min. / Adana - 06 [pb] // wl: *Podonta / atrata* Kies [hb], (NMPC).

**Remarks.** Habitus as in Fig. 1, head, pronotum and maxillary palpus (Fig. 2), antenna as



Figs. 1-7: *Podonta atrata* Kiesenwetter, 1873 (male): 1- habitus; 2- head, pronotum and maxillary palpus; 3- antenna; 4- protarsus; 5- abdomen; 6- aedeagus, dorsal view; 7- aedeagus, lateral view.

in Fig. 3, protarsus (Fig. 4), abdomen as in Fig. 5 and aedeagus as in Figs. 6 and 7. All morphological characters of *P. atrata* and *P. dentella* are the same. For this reason, it is possible to say that *Podonta dentella* Mucbe, 1962 is a junior synonym of *Podonta atrata* Kiesenwetter, 1873.

**Measurements of body parts (male from Adana in VNPC).** BL 9.69 mm; HL 1.17 mm; HW 1.71 mm; OI equal to 63.94; PL 2.01 mm; PW 3.12 mm; PI equal to 64.43; EL 6.51 mm; EW 3.50 mm; AL 4.14 mm; AL/BL 0.43; HW/PW 0.55; BL/EW 2.77; EL/EW 1.86; RL/WP 2.08; RL/WUP 1.87; AED 1: 4.06.

RLA (1-11): 0.82 : 0.43 : 1.00 : 1.01 : 1.03 : 1.11 : 1.08 : 1.06 : 1.03 : 0.94 : 1.33.

RL/WA (1-11): 2.03 : 1.19 : 2.45 : 2.11 : 2.13 : 2.41 : 2.38 : 1.92 : 1.93 : 1.8 : 2.89.

RLT: 1.00 : 0.53 : 0.41 : 0.46 : 1.67 (protarsus), 1.00 : 0.48 : 0.44 : 0.39 : 0.78 (mesotarsus), 1.00 : 0.49 : 0.35 : 0.66 (metatarsus).

**Distribution.** Cyprus, Israel, Syria, Turkey.

***Podonta babadagiica* sp. nov.**

(Figs. 8-13)

**Type locality.** Turkey m., Baba Dagi mt. near Fethiye.

**Type material.** Holotype (♂): wl: TURKEY mer. / BABA DAGI mt., 1800 / m FETHIYE env., 23.vi. / 2013; V. Novák lgt., (VNPC); Paratypes: (1 ♂ 8 ♀♀): same data as holotype, (NMEG, VNPC); (3 ♂♂): wl: W-TÜRKEI, Dalaman / Kayakoy b. Fethiye, 173m / 36°34'27''N, 29°05'23''E / W.Skale, 05.06.2009, HF, (NMEG, VNPC). The types are provided with a printed red label: 'Podonta babadagiica sp. nov. / HOLOTYPUS [or PARATYPUS] / V. Novák det. 2014'.

**Description of holotype.** Habitus as in Fig. 8, body black, dorsal surface with punctuation, microgranulation and setation, slightly shiny, BL 9.81 mm. Widest near half of elytra length; BL/EW 2.86.

Head (Fig. 9) black, relatively small, wide, shiny with punctuation. Posterior part with dark setation slightly denser behind eyes. HW 1.73 mm; HW/PW 0.53. HL (visible part) 1.23 mm. Eyes relatively large, transverse, distinctly excised, space between eyes broad, wider than diameter of one eye, approximately as wide as anterior part of head; OI equal to 55.90.

Antenna (Fig. 10) short, black, with punctuation, short and dark setation. AL 3.87 mm, AL/BL 0.40. Antennomeres 1-5 slightly shiny, antennomeres 6-11 with distinct microgranulation, rather matte. Antennomeres 3-10 distinctly widest in apex. Antennomere 2 shortest, antennomere 11 longest.

RLA (1-11): 0.95 : 0.52 : 1.00 : 1.03 : 0.99 : 1.02 : 1.00 : 1.03 : 0.99 : 1.02 : 1.11.

RL/WA (1-11): 1.80 : 1.18 : 2.29 : 2.13 : 1.79 : 1.65 : 1.54 : 1.50 : 1.59 : 1.69 : 2.20.

Maxillary palpus (Fig. 9). Black, with fine microgranulation, sparse punctuation and dark setation. Ultimate palpomere slightly triangular, axe-shaped, widest in slightly rounded apex. Palpomeres 2 and 3 distinctly narrowest at base, slightly dilated anteriorly; RL/WP 1.55.

Pronotum (Fig. 9). Black, wide, almost semicircular, with relatively dense setation, microgranulation and dense punctuation, punctures small-sized, interspaces between punctures narrow, approximately as wide as diameter of punctures. Lateral margins arcuate, anterior margin very slightly rounded, posterior margin slightly bisinuate, anterior angles slightly distinct, posterior angles rectangular, slightly extended backwards. PL 1.80 mm; PW 3.28 mm. PI equal to 55.02.

Ventral side of body black with punctuation, prothorax with distinct dark setation. Abdomen black, with irregular punctuation and fine microgranulation, rather matte.

Elytron black, elongate, relatively narrow, with dense setation, microgranulation and dense punctuation, punctures small-sized. Rows of punctures in elytral striae indistinct. EL 6.78 mm. Widest near half elytra length, EW 3.43 mm. EL/EW 1.98.

Scutellum black, relatively large, roundly triangular, with microgranulation and a few punctures and dark setae.

Elytral epipleura well-developed, black, relatively wide, regularly narrowing to ventrite 1 in basal half, then leading parallel.

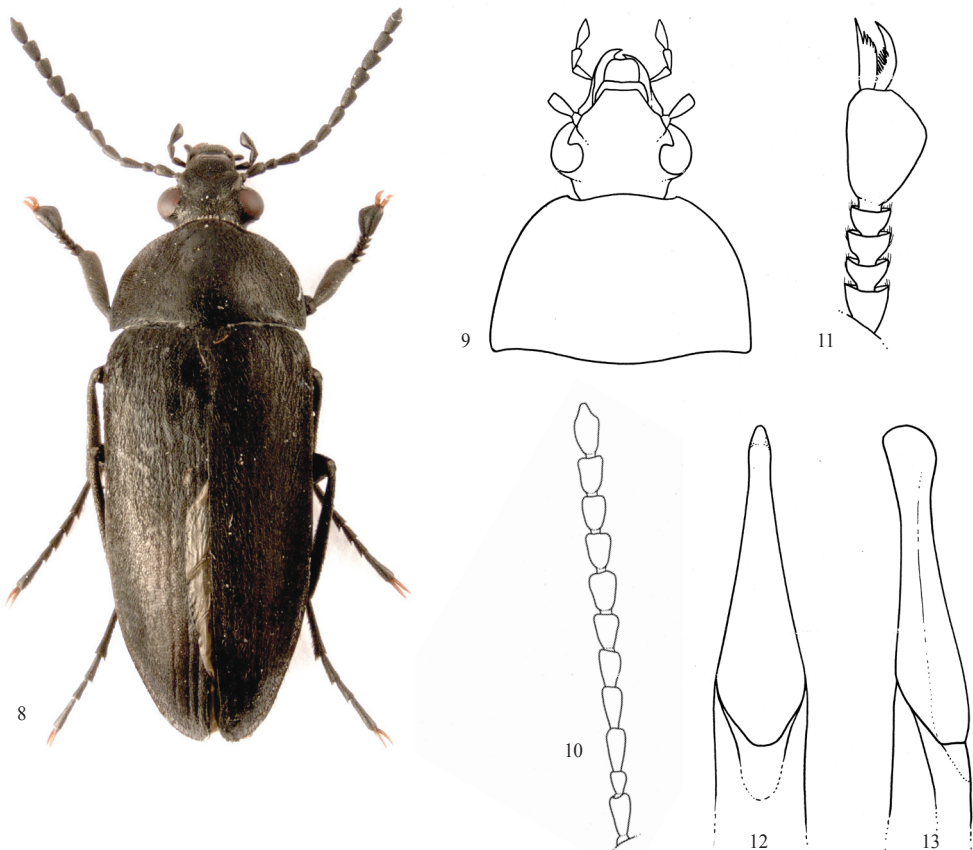
Legs black, with dense and short dark setation, fine microgranulation and fine

punctuation. Protibia shorter, wider and stronger than meso- and metatibia. Penultimate tarsomeres without membranous lobes. Protarsomeres 1-4 very short, protarsomeres 2-4 transverse. Ultimate protarsomere (Fig. 11) strongly angularly widened on inner side (RL/WUP equal to 1.44). RLT: protarsus: 1.00 : 0.53 : 0.53 : 0.52 : 2.44; mesotarsus: 1.00 : 0.49 : 0.45 : 0.34 : 1.00; metatarsus: 1.00 : 0.48 : 0.34 : 0.67.

Inner anterior tarsal claw with 6 visible teeth, outer anterior tarsal claw with 14 teeth.

Aedeagus (Figs. 12, 13). Basal piece distinctly darker than apical piece, regularly rounded laterally and narrowing dorsally. Apical piece short and narrow, slightly beak-shaped with rounded tip in apex laterally and longitudinally, triangular dorsally. Ratio of length of apical piece to length of basal piece 1 : 4.15.

**Female** without angularly widened ultimate protarsomere, protarsomeres 2-4 narrower than in male; ultimate visible ventrite without excision, both anterior tarsal claws with 10 visible teeth.



Figs. 8-13: *Podonta babadagiica* sp. nov. (male holotype): 8- Habitus; 9- head, pronotum and maxillary palpus; 10- antenna; 11- protarsus; 12- aedeagus, dorsal view; 13- aedeagus, lateral view.

**Variability.** The type specimens somewhat vary in size; each character is given as its mean value, with full range in parentheses. Males (n=5). BL 9.35 mm (8.87-9.81 mm); HL 1.13 mm (1.00-1.27 mm); HW 1.66 mm (1.55-1.73 mm); OI 52.97 (48.97-55.90); PL 1.7 mm (1.58-1.84 mm); PW 3.08 mm (2.87-3.28 mm); PI 56.27 (53.20-60.93); EL 6.49 mm (6.23-6.78 mm); EW 3.33 mm (3.14-3.43 mm). Females (n=8). BL 9.58 mm (8.99-10.09 mm); HL 1.10 mm (0.98-1.30 mm); HW 1.58 mm (1.48-1.71 mm); OI 57.30 (55.17-60.23); PL 1.78 mm (1.57-2.05 mm); PW 3.03 mm (2.81-3.31 mm); PI 58.46 (55.88-61.97); EL 6.71 mm (6.41-6.99 mm); EW 3.42 mm (3.10-3.62 mm).

**Differential diagnosis.** *Podonta babadagiica* sp. nov. distinctly differs from the species *Podonta atrata* Kiesenwetter, 1873, *Podonta biformis* Reitter, 1898 and *Podonta pseudoatrata* sp. nov. mainly by ultimate protarsomere not excised on inner side; while *P. atrata*, *P. biformis* and *P. pseudoatrata* have ultimate protarsomere distinctly excised on inner side. *P. babadagiica* is clearly different from the species *Podonta eckerleini* Muche, 1963, *Podonta murzini* sp. nov., *Podonta nigrita* (Fabricius, 1794) and *Podonta soror* Seidlitz, 1896 mainly by ultimate protarsomere strongly widened on inner side (protarsomere is distinctly wider than apex of tibia); while ultimate protarsomere of *P. eckerleini*, *P. murzini*, *P. nigrita* and *P. soror* is as wide as or narrower than apex of tibia. *P. babadagiica* distinctly differs from the species *Podonta frater* Seidlitz, 1896 mainly by drop-shaped apex of apical piece of aedeagus and dense and shallow punctuation of basal part of head, while *P. frater* has apex of apical piece of aedeagus narrow - without drop, and punctuation of basal part of head is sparse and coarser.

**Etymology.** Toponymic, after the name of type locality Baba Dagi Mt. near Fethyie.

**Distribution.** Turkey.

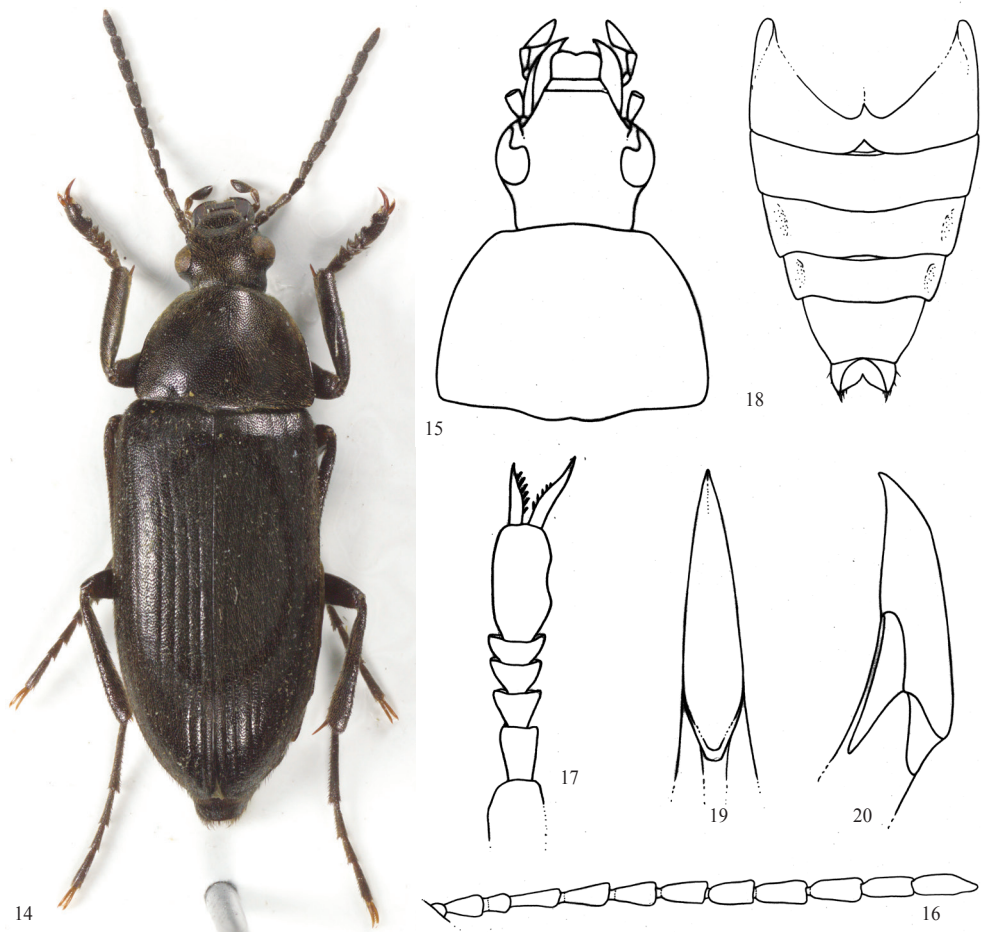
### *Podonta biformis* Reitter, 1889

(Figs. 14-20)

*Podonta biformis* Reitter, 1889: 374;  
= *Podonta ruficollis* Seidlitz, 1896: 189.

**Material examined.** (2 ♂♂ 3 ♀♀) [one male specimen for measurements]: wl with bf: SE TURKEY, Halfeti / (Euphrates river) NE / Gaziantep, 15.V.2001 / lgt. P. Kabátek, (NMPC, VNPC); (1 ♂): wl: Tr. 1.6.2004 / Aidyaman / lgt. J. Horyna, (VNPC); (1 ♂ 1 ♀): wl: Tr vill. Bingöl 2390 m / Kuruca geç. 16.vi.86 / Kadlec + Voříšek leg., (VNPC); (1 ♀): wl: Tr vill. Adiyaman / Malatya Dağları / Gölbaşı 15.6.1986 / Kadlec + Voříšek leg., (VNPC); (1 ♀): wl: TURKEY 11.7.1993 / Tatvan / M. Šárovec, (VNPC); (1 ♂ 2 ♀♀): wl with bf: IRAN, Lorestan prov. / Dorud 52 km SE / Borugerd, 2-3.6.2005 / F. Pavel leg., (VNPC); (1 ♂): wl: IRAN - Lorestan Prov. / DORUD / 33°25'N, 49°06'E, 1740 m / S. Kadlec leg. 13.vi.2000, (VNPC); (1 ♂): wl: W Iran p. Lorestan, Dorud / 80km E Horramābād / 3325N 4906E 11.VI.1999 / lgt. P. Kabátek, (VNPC).

**Remarks.** Habitus as in Fig. 14, head, pronotum and maxillary palpus (Fig. 15), antenna as in Fig. 16, protarsus (Fig. 17), abdomen as in Fig. 18 and aedeagus as in Figs. 19 and 20. Female often with red pronotum, female specimens from Iran can be brown or reddish brown.



Figs. 14-20: *Podonta biformis* Reitter, 1889 (male): 14- habitus; 15- head, pronotum and maxillary palpus; 16- antenna; 17- protarsus; 18- abdomen; 19- aedeagus, dorsal view; 20- aedeagus, lateral view.

**Measurements of body parts (male from Halfeti in VNPC).** BL 8.97 mm; HL 1.17 mm; HW 1.52 mm; OI equal to 60.71; PL 1.79 mm; PW 2.69 mm; PI equal to 66.48; EL 6.01 mm; EW 3.24 mm; AL 3.59 mm; AL/BL 0.40; HW/PW 0.57; BL/EW 2.77; EL/EW 1.86; RL/WP 2.15; RL/WUP 2.12; AED 1: 4.77.

RLA (1-11): 0.55 : 0.42 : 1.00 : 0.86 : 0.81 : 0.90 : 0.87 : 1.08 : 0.98 : 0.99 : 1.17.

RL/WA (1-11): 1.36 : 1.30 : 2.58 : 2.08 : 1.85 : 2.24 : 1.90 : 2.31 : 2.12 : 2.46 : 3.09.

RLT: 1.00 : 0.61 : 0.71 : 0.61 : 2.85 (protarsus), 1.00 : 0.42 : 0.39 : 0.29 : 0.70 (mesotarsus), 1.00 : 0.48 : 0.35 : 0.63 (metatarsus).

**Distribution.** Armenia, Iran, Iraq, Syria, Turkey.



***Podonta eckerleini* Muehe, 1963**

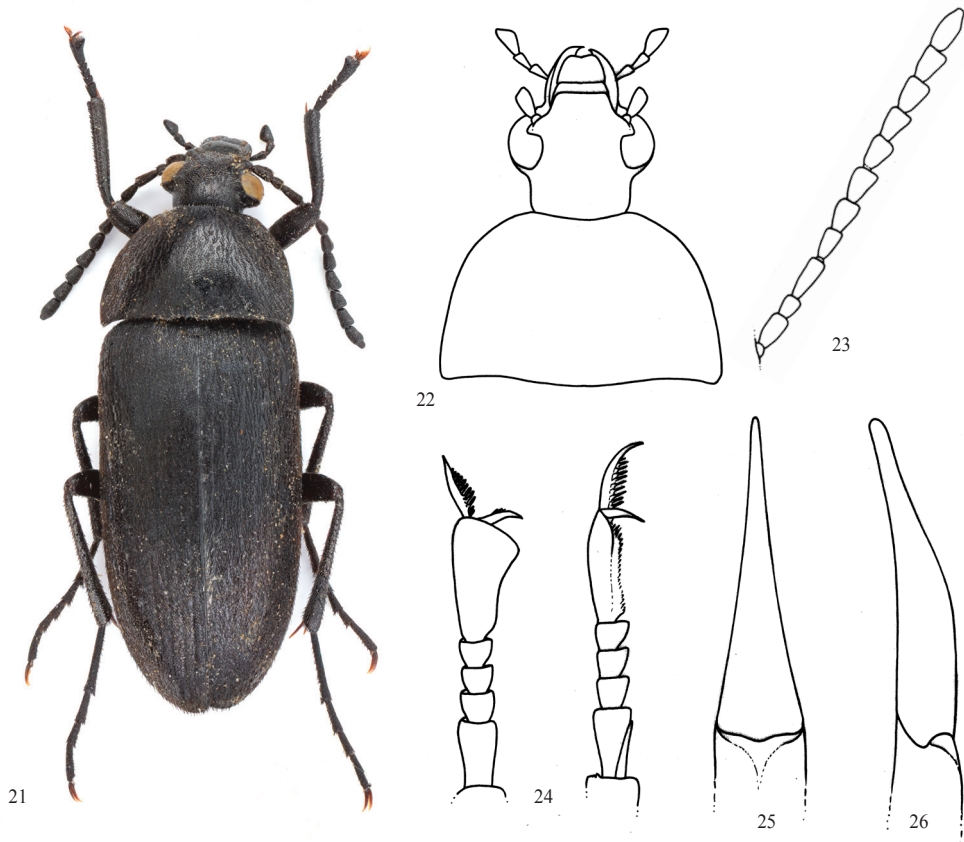
(Figs. 21-26)

*Podonta eckerleini* Muehe, 1963: 61.

**Type material.** Syntype: (1 ♂): wl: TÜRKEI, Keçiören / (Ankara), 13. 5. 62 / leg. H. Eckerlein [pb] // rl: Typus [pb] // wl: *Podonta eckerleini* m. [hg] / determ. Muehe [pb] Typ. / 1963 [hg], (MTDG).

**Material examined.** (4 ♂♂ 1 ♀): wl: TR - prov. ANKARA / Ankara env., 800-1600m / 20.6.1996 / P. Zahradník lgt. [pb], (PZPC, VNPC); (2 ♀♀): wl: TR - prov. ANKARA / Ankara env., 800-1600m / 20.6.1996 [pb] Δ KYURT [hb] / Z. Malinka lgt. [pb], (VNPC, ZMOC).

**Remarks.** Habitus as in Fig. 21, head, pronotum and maxillary palpus (Fig. 22), antenna as in Fig. 23, protarsus (Fig. 24) and aedeagus as in Figs. 25 and 26.



Figs. 21-26: *Podonta eckerleini* Muehe, 1963 (male): 21- habitus; 22- head, pronotum and maxillary palpus; 23- antenna; 24- protarsus; 25- aedeagus, dorsal view; 26- aedeagus, lateral view.

**Measurements of body parts (male from Ankara in VNPC).** BL 8.28 mm; HL 1.05 mm; HW 1.42 mm; OI equal to 57.72; PL 1.60 mm; PW 2.47 mm; PI equal to 64.67; EL 5.63 mm; EW 2.64 mm; AL 3.54 mm; AL/BL 0.43; HW/PW 0.58; BL/EW 3.14; EL/EW 2.13; RL/WP 1.52; RL/WUP 2.29; AED 1: 3.40.

RLA (1-11): 0.94 : 0.58 : 1.00 : 1.08 : 0.99 : 1.01 : 1.02 : 1.02 : 1.02 : 1.09 : 1.34.

RL/WA (1-11): 1.91 : 1.30 : 2.31 : 1.92 : 1.66 : 1.53 : 1.51 : 1.36 : 1.36 : 1.43 : 2.05.

RLT: 1.00 : 0.50 : 0.50 : 0.40 : 2.25 (protarsus), 1.00 : 0.53 : 0.43 : 0.36 : 0.86 (mesotarsus), 1.00 : 0.47 : 0.33 : 0.63 (metatarsus).

**Distribution.** Turkey.

***Podonta frater* Seidlitz, 1896**

(Figs. 27-32)

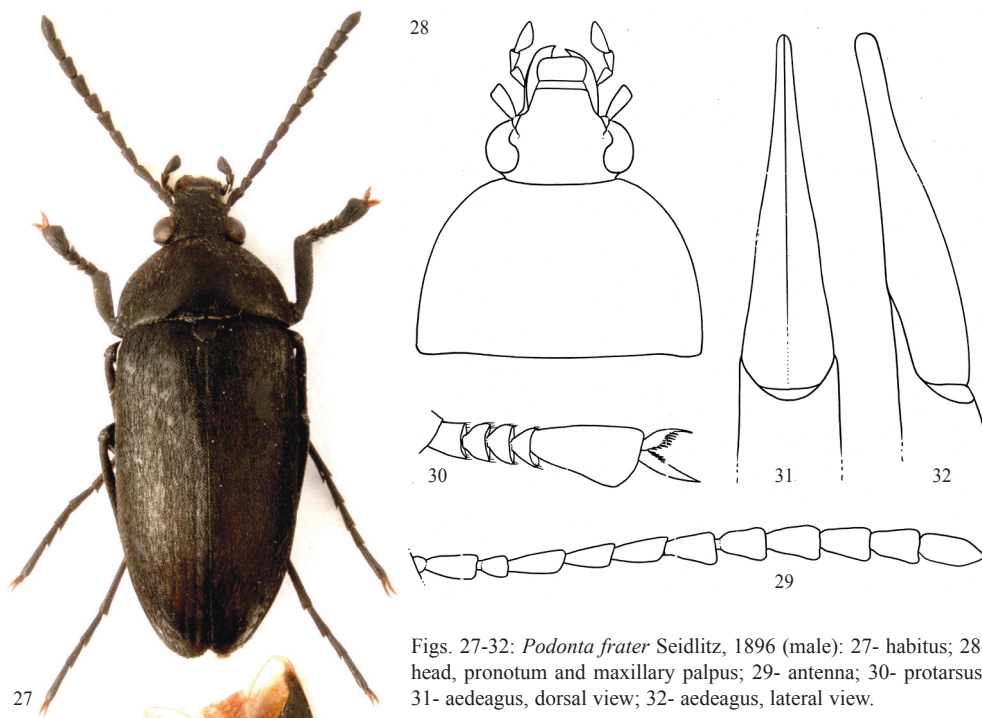
*Podonta frater* Seidlitz, 1896: 190.

**Type material.** (Syntype ♂): wl: Kis - Aule [hb] / ♂ [hb] // wl with yl: frater [hb] / Seidl [hb], (ZSMG).

**Type condition.** Type specimen on pin; right antenna without antennomeres 10 and 11, left antenna missing antennomeres 9-11. Specimen without left protarsus, both metatarsomeres, left mesotarsomeres 4 and 5 and right mesotarsomeres 3-5. Apical piece of aedeagus is visible.

**Material examined.** (♂): wl: Turkey mer., Antalya / prov., Taurus Daglari / ASPENDOS, 18.vi.2013 / V. Novák lgt., (VNPC).

**Redescription of male.** Habitus as in Fig. 27, body smaller, elongate, convex, dorsal surface black, with dense and coarse punctuation and setation, rather matte, BL 7.91 mm. Widest near half of elytra length; BL/EW 2.76. Head (Fig. 28) black, relatively small, narrow with sparse and long setation and dense punctuation. Setation behind eyes dense, short and dark. Clypeus distinctly wider than long. HW 1.54 mm; HW/PW 0.55. HL (visible part) 0.96 mm. OI equal to 54.55. Eyes relatively large, transverse, slightly excised, space between eyes wide, distinctly wider than diameter of one eye, slightly wider than anterior part and clypeus. Antenna (Fig. 29) black, short, with short setation, microgranulation and punctuation, punctures small. AL 3.78 mm, AL/BL 0.48. Antennomere 2 shortest, antennomere 3 distinctly longer than each of apically widened antennomeres 4-10. RLA (1-11): 0.90 : 0.52 : 1.00 : 0.94 : 0.89 : 0.92 : 0.87 : 0.98 : 0.94 : 0.89 : 1.17. RL/WA (1-11): 1.86 : 1.19 : 2.12 : 2.15 : 1.96 : 1.85 : 1.55 : 1.62 : 1.58 : 1.61 : 2.38. Maxillary palpus black with microgranulation, punctures and long, dark setation, matte. Ultimate palpomere axe-shaped with truncated apex. Palpomeres 2 and 3 distinctly narrowest at base, slightly dilated anteriorly; RL/WP 1.83. Pronotum (Fig. 28) black, shiny, transverse, with long setation and dense punctuation, punctures small-sized, interspaces between punctures narrow, slightly wider than diameter of punctures. Border lines distinct and complete, only near anterior angles indistinct. Lateral margins slightly arcuate. Anterior margin slightly excised, posterior margin almost straight, anterior angles not clearly conspicuous, posterior angles roundly rectangular. PL 1.43 mm; PW 2.81 mm. PI equal to 50.77. Ventral side of body black with setation and punctuation.



Figs. 27-32: *Podonta frater* Seidlitz, 1896 (male): 27- habitus; 28- head, pronotum and maxillary palpus; 29- antenna; 30- protarsus; 31- aedeagus, dorsal view; 32- aedeagus, lateral view.

Abdomen black, with pale setation, small punctures and fine microgranulation. Ultimate ventrite with heart-shaped excision. Elytron black, elongate, matter than pronotum, with dense and long setation, very fine microgranulation and dense punctuation, punctures small-sized. Elytral striae and elytral intervals indistinct. Widest near half elytra length. EL 5.52 mm, EW 2.87 mm. EL/EW 1.92. Scutellum black, relatively large, roundly triangular with microgranulation, punctures and long setae. Elytral epipleura black, well-developed with pale setation and punctures. Wide in basal part, regularly narrowing to ventrite 2, then leading parallel. Legs black, with dark setation, microgranulation and dense punctuation, punctures small. Tibiae relatively strong, distinctly dilated anteriorly. Protarsus as in Fig. 30, protarsomeres 2-4 wide, transverse, ultimate protarsomere strongly widened at inner side. Meso- and metatarsi narrow and long. RLT: protarsus: 1.00 : 0.81 : 0.84 : 0.49 : 3.11; mesotarsus: 1.00 : 0.62 : 0.56 : 0.45 : 1.08; metatarsus: 1.00 : 0.56 : 0.41 : 0.76; RL/WUP 1.62. Outer, shorter anterior tarsal claws with 9 visible teeth, inner long anterior tarsal claw with 5 visible teeth. Aedeagus (Figs. 31, 32) pale brown, shiny. Basal piece rounded laterally and narrowing dorsally. Apical piece narrow, beak-shaped with rounded top laterally and elongate-triangular dorsally. Ratio of length of apical piece to length of basal piece 1: 4.38.

**Distribution.** Turkey.

***Podonta murzini* sp. nov.**

(Figs. 33-38)

**Type locality.** North Iran, prov. Zanjan, env. of Kuhin, 40 km WNW Qazvin, 1500-1600 m.

**Type material.** Holotype (♂): wl: N IRAN, ZANJAN pr. / env. Kuhin, 40 km WNW / Qazvin, 1500-1600 m, 22.- / 28.v.2007; S. Murzin lg., (VNPC). Paratypes: (12 ♂♂ 7 ♀♀): same data as holotype, (VNPC); (10 ♀♀): wl: Iran N, Qazvin prov., / Quhin pass, 1500m, / 10. VI. 2006 / leg. V. Patrikeev // wl with bf: Collection / Andreas Pütz / Eisenhüttenstadt, (APEG, VNPC); (4 ♂♂ 13 ♀♀): wl: Iran NW, E Azerbaijan prov., / Tabriz distr., Kendavan vill., / 2500m, 22. VI. 2006 / leg. V. Patrikeev // wl with bf: Collection / Andreas Pütz / Eisenhüttenstadt, (APEG, VNPC); (28 ♂♂ 12 ♀♀): wl: Turkey, SE Anat. / Yüksekova / 7.7.1973 // Exp. Nat. Mus. / Praha, (NMPC, VNPC). The types are provided with a printed red label: 'Podonta murzini sp. nov. / HOLOTYPUS [or PARATYPUS] / V. Novák det. 2014'.

**Description of holotype.** Habitus as in Fig. 33, body small, elongate, narrow, dorsal surface black, with punctuation, and pale setation, shiny, BL 7.14 mm. Widest near half elytra length; BL/EW 3.08.

Head (Fig. 34) black, relatively small, narrow and long with very sparse pale setae, and punctuation. Setation behind eyes short and dark. Anterior part narrow and long, clypeus longer than wide. HW 1.30 mm; HW/PW 0.57. HL (visible part) 1.19 mm. Eyes relatively large, transverse, slightly excised, space between eyes wide, distinctly wider than diameter of one eye, slightly wider than anterior part and clypeus; OI equal to 58.82.

Antenna (Fig. 35). Black, short, filiform, with microgranulation, short setation, and punctuation, AL 2.96 mm, AL/BL 0.42. Antennomere 2 shortest. Antennomeres 1-4 slightly shiny, antennomeres 5-11 matter.

RLA (1-11): 0.82 : 0.61 : 1.00 : 0.86 : 0.92 : 0.93 : 0.88 : 1.03 : 0.91 : 0.99 : 1.28.

RL/WA (1-11): 1.83 : 1.40 : 2.35 : 1.84 : 2.08 : 1.95 : 1.61 : 1.92 : 1.76 : 1.75 : 2.48.

Maxillary palpus. Black, shiny with punctuation and long setation. Ultimate palpomere relatively short and narrow, more knife-shaped, at apex straight truncate. Palpomeres 2 and 3 distinctly narrowest at base, slightly dilated anteriorly; RL/WP 2.80.

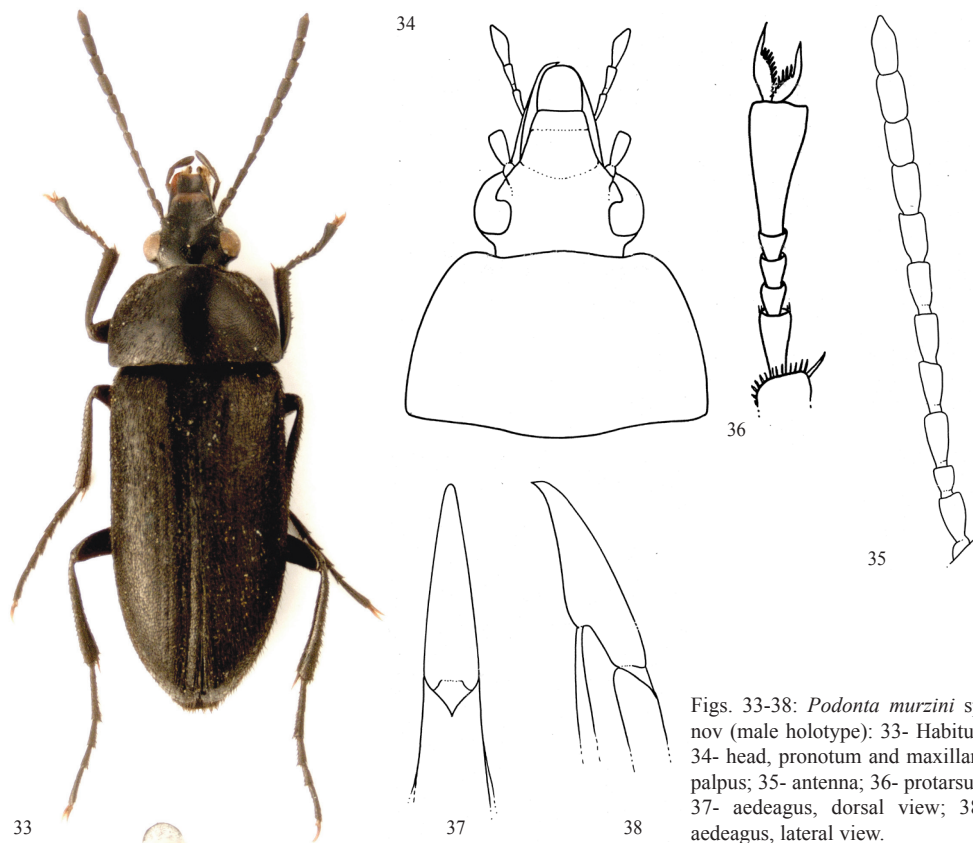
Pronotum (Fig. 34). Black, shiny, transverse, with pale setation, sparse microgranulation and dense, shallow punctuation, punctures small-sized, interspaces between punctures narrow. Border lines distinct and complete. Lateral margins in basal half more parallel, in anterior half distinctly arcuate. Anterior and posterior margins slightly bisinuate, posterior margin straighter, anterior angles distinct, posterior angles roundly rectangular. PL 1.35 mm; PW 2.29 mm. PI equal to 59.21.

Ventral side of body black, slightly shiny, with setation and punctuation. Abdomen black with setation and punctuation. Ultimate ventrite strongly roundly excised.

Elytron black, elongate, matter than pronotum, with dense and long, pale setation, fine microgranulation and dense punctuation, punctures small-sized. Setation near sides and in apex darker. Elytral striae and elytral interspaces indistinct. EL 4.60 mm. Widest near half of elytra length, EW 2.32 mm. EL/EW 1.98.

Scutellum. Indistinct, small, black, with punctuation.

Elytral epipleura well-developed, black, regularly narrowing to ventrite 2, then leading parallel.



Figs. 33-38: *Podonta murzini* sp. nov (male holotype): 33- Habitus; 34- head, pronotum and maxillary palpus; 35- antenna; 36- protarsus; 37- aedeagus, dorsal view; 38- aedeagus, lateral view.

Legs. Black, with dark setation, microgranulation and dense punctuation, punctures very small. Tibiae slightly dilated anteriorly. Protarsomeres 1- 4 narrow, ultimate protarsomere angularly widened in apex (as in Fig. 36). RL/WUP 2.51. RLT: protarsus: 1.00 : 0.52 : 0.44 : 0.38 : 1.91; mesotarsus: 1.00 : 0.59 : 0.54 : 0.42 : 1.18; metatarsus: 1.00 : 0.45 : 0.39 : 0.82.

Outer anterior tarsal claw with 11 visible teeth, inner anterior tarsal claw with 5 visible teeth.

Aedeagus (Figs. 37, 38). Ochre yellow, slightly shiny. Basal piece rounded laterally and distinctly narrowing dorsally. Apical piece narrowly elongate triangular dorsally and distinctly beak-shaped laterally. Ratio of length of apical piece to length of basal piece 1: 3.35.

**Female.** Ultimate protarsomere not widened, ultimate palpomere narrower and longer than in male, both anterior tarsal claws with 4 visible teeth.

**Variability.** The type specimens somewhat vary in size; each character is given as its mean value, with full range in parentheses. Males (n=45). BL 7.02 mm (6.33-7.58 mm); HL 1.12

mm (0.97-1.26 mm); HW 1.26 mm (1.18-1.33 mm); OI 60.44 (57.29-62.98); PL 1.29 mm (1.13-1.40 mm); PW 2.16 mm (1.98-2.43 mm); PI 59.58 (55.32-65.04); EL 4.61 mm (4.18-4.95 mm); EW 2.34 mm (2.16-2.59 mm). Females (n=42). BL 7.45 mm (6.48-8.25 mm); HL 1.08 mm (0.98-1.26 mm); HW 1.29 mm (1.13-1.37 mm); OI 62.05 (56.05-68.46); PL 1.35 mm (1.13-1.51 mm); PW 2.25 mm (1.88-2.64 mm); PI 59.90 (56.38-65.47); EL 5.02 mm (4.32-5.53 mm); EW 2.57 mm (2.17-2.95 mm).

**Differential diagnosis.** *Podonta murzini* sp. nov. distinctly differs from the species *Podonta atrata* Kiesenwetter, 1873, *Podonta biformis* Reitter, 1898 and *Podonta pseudoatrata* sp. nov. mainly by ultimate protarsomere not excised on inner side; while *P. atrata*, *P. biformis* and *P. pseudoatrata* have ultimate protarsomere distinctly excised on inner side. *P. murzini* is clearly different from the species *Podonta babadagiica* sp. nov. and *Podonta frater* Seidlitz, 1896 mainly by ultimate protarsomere as wide as apex of tibia; while *P. babadagiica* and *P. frater* have ultimate protarsomere strongly widened on inner side (protarsomere is distinctly wider than apex of tibia). *P. murzini* clearly differs from the species *Podonta eckerleini* Mucho, 1963, *Podonta nigrita* (Fabricius, 1794) and *Podonta soror* Seidlitz, 1896 mainly by clypeus as long as wide; while *P. eckerleini*, *P. nigrita* and *P. soror* have clypeus distinctly wider than long.

**Etymology.** New species is dedicated to one of the collectors - Sergei Murzin.

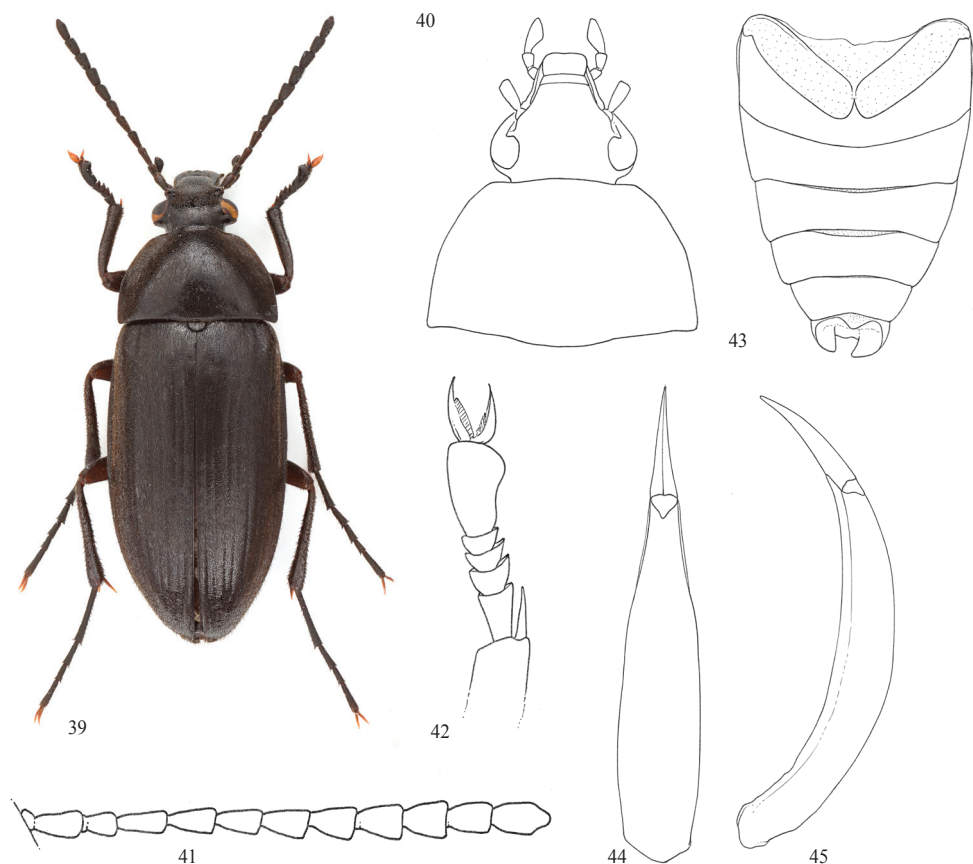
**Distribution.** Iran, Turkey.

***Podonta nigrita* (Fabricius, 1794)**  
(Figs. 39-45)

*Cistela nigrita* Fabricius, 1794: 447.

**New material examined.** (6 ♂♂ 1 ♀): wl: Moravia mer., SEDLEC / env., EVL Skalky / 48°76'N 16°69'E / 26.vi.2015; V. Novák lgt., (VNPC).

**Redescription (based on male from Sedlec).** Habitus as in Fig. 39, body small, elongate, narrow, dorsal surface black, with punctuation, fine microgranulation, and pale setation, shiny, BL 8.89 mm. Widest near half elytra length; BL/EW 2.70. Head (Fig. 40) black, relatively small, narrow, with very sparse pale setae, dense punctuation and sparse, fine microgranulation. Setae behind eyes short and dark. Anterior part narrow, clypeus wider than long. HL (visible part) 1.01 mm; HW 1.59 mm; HW/PW 0.55; OI equal to 61.56. Eyes relatively large, transverse, slightly excised, space between eyes wide, distinctly wider than diameter of one eye, slightly wider than anterior part and clypeus. Antenna (Fig. 41) black, short, filiform, with microgranulation, short setation, and punctuation, AL 3.70 mm; AL/BL 0.42. Antennomere 2 shortest. Antennomeres 1-5 slightly shiny, antennomeres 5-11 matter, antennomeres 4-10 distinctly widest at apex. RLA (1-11): 0.83 : 0.58 : 1.00 : 0.91 : 0.92 : 0.97 : 0.92 : 1.07 : 0.96 : 0.91 : 1.20. RL/WA (1-11): 1.75 : 1.38 : 2.71 : 1.92 : 2.06 : 1.90 : 1.59 : 1.76 : 1.62 : 1.87 : 2.60. Maxillary palpus black, shiny with punctuation and setation. Ultimate palpomere relatively short, widest at apex, slightly axe-shaped, at apex straight



Figs. 39-45: *Podonta nigrita* (Fabricius, 1794) (male): 39- habitus; 40- head, pronotum and maxillary palpus; 41- antenna; 42- protarsus; 43- abdomen; 44- aedeagus, dorsal view; 45- aedeagus, lateral view.

truncate. Palpomeres 2 and 3 distinctly narrowest at base, slightly dilated anteriorly; RL/WP 1.89. Pronotum (Fig. 40) black, shiny, transverse, with pale setation, sparse microgranulation and dense punctuation, punctures small-sized, interspaces between punctures narrow. Border lines distinct and complete, only near anterior angles indistinct. Lateral margins slightly arcuate. Anterior and posterior margins nearly straight, anterior angles distinct, posterior angles roundly rectangular. PL 1.72 mm; PW 2.91 mm; PI equal to 59.02. Ventral side of body black, with short setation and punctuation. Abdomen (Fig. 43) black, matte, with setation, fine microgranulation and punctuation, punctures very small. Ultimate ventrite strongly roundly excised. Elytron black, elongate, slightly matter than pronotum, with dense setation, fine microgranulation and dense punctuation, punctures small-sized. Elytral striae slightly distinct. Widest near half elytra length, EL 6.16 mm; EW 3.29 mm. EL/EW 1.87. Scutellum small, black, roundly triangular, with punctures and setae. Elytral epipleura well-developed, black, slightly shiny, regularly narrowing to ventrite 1, then leads parallel. Legs black, with dark setation, microgranulation and dense punctuation, punctures very small.

Tibiae slightly dilated anteriorly. Protarsomeres 2-4 wide, transverse, ultimate protarsomere angularly widened (Fig. 42) at apex; RL/WUP 2.30. RLT: 1.00 : 0.59 : 0.37 : 0.37 : 0.23 (protarsus), 1.00 : 0.53 : 0.42 : 0.37 : 0.79 (mesotarsus), 1.00 : 0.44 : 0.30 : 0.55 (metatarsus). Tarsal claws reddish brown, outer anterior tarsal claw with 23 visible teeth, longer than inner, inner anterior tarsal claw with 3 visible teeth. Aedeagus (Figs. 44, 45) ochre yellow, slightly shiny. Basal piece rounded laterally and distinctly narrowing dorsally. Apical piece narrowly elongate-triangular dorsally and distinctly rounded and finely beak-shaped laterally. Ratio of length of apical piece to length of basal piece 1: 3.46.

**Female.** Ultimate protarsomere not widened, protarsomeres 2-4 narrower than in male, both anterior tarsal claws with same length, outer with 12, inner with 9 visible teeth.

**Distribution.** Albania, Austria, Bosnia Herzegovina, Bulgaria, Croatia, Czech Republic, Greece, Hungary, Italia, Poland, Romania, Russia, Slovakia, Switzerland, Turkey, Ukraine, Yugoslavia, Caucasus.

***Podonta pseudoatrata* sp. nov.**

(Figs. 46-52)

**Type locality.** Syria, Tartoun Merkiyh.

**Material examined.** Holotype (♂): wl: Syrien Tartoun / Merkiyh / 24.5.1980 / leg. Mühle, (VNPC). Paratype: (1 ♂): same data as holotype, (VNPC). The types are provided with a printed red label: 'Podonta pseudoatrata sp. nov. / HOLOTYPUS [or PARATYPUS] / V. Novák det. 2014'.

**Description of holotype.** Habitus as in Fig. 46, body large, elongate, wider, robust, dorsal surface black, with dense and coarse punctuation, fine microgranulation and pale setation, more matte, BL 9.92 mm. Widest near half of elytra length; BL/EW 2.70.

Head (Fig. 47) black, relatively small, narrow with sparse and long, pale setae and dense, coarse punctuation. Setation behind eyes short and dark. Clypeus distinctly wider than long. HL (visible part) 1.38 mm; HW 1.82 mm; OI equal to 60.34. Eyes relatively large, transverse, slightly excised, space between eyes wide, distinctly wider than diameter of one eye, slightly wider than anterior part and clypeus.

Antenna (Fig. 48). Black, short, filiform, with microgranulation, short setation, and punctuation, AL 4.64 mm; AL/BL 0.47. Antennomere 2 shortest, ultimate antennomere longest. Antennomeres 1-4 slightly shiny, antennomeres 5-11 matter.

RLA (1-11): 0.62 : 0.42 : 1.00 : 0.97 : 0.90 : 0.90 : 0.89 : 0.90 : 0.95 : 0.92 : 1.17.

RL/WA (1-11): 1.69 : 1.18 : 2.52 : 2.30 : 2.00 : 1.84 : 1.68 : 1.80 : 2.00 : 2.12 : 3.14.

Maxillary palpus. Black, shiny with microgranulation and short setation. Ultimate palpomere relatively long knife-shaped with inner side regularly arcuate. Palpomeres 2 and 3 distinctly narrowest at base, slightly dilated anteriorly; RL/WP 2.37.

Pronotum (Fig. 47). Black, slightly shiny, transverse, with pale setation, microgranulation and dense, coarse punctuation, punctures small-sized, interspaces between punctures very narrow. Border lines distinct and complete, only at sides of anterior margin indistinct. Lateral margins in basal half more parallel, in anterior half distinctly arcuate. Anterior margin



slightly arcuate, posterior margin straighter, anterior angles distinct, posterior angles roundly obtuse. PL 2.06 mm; PW 3.03 mm; PI equal to 68.02.

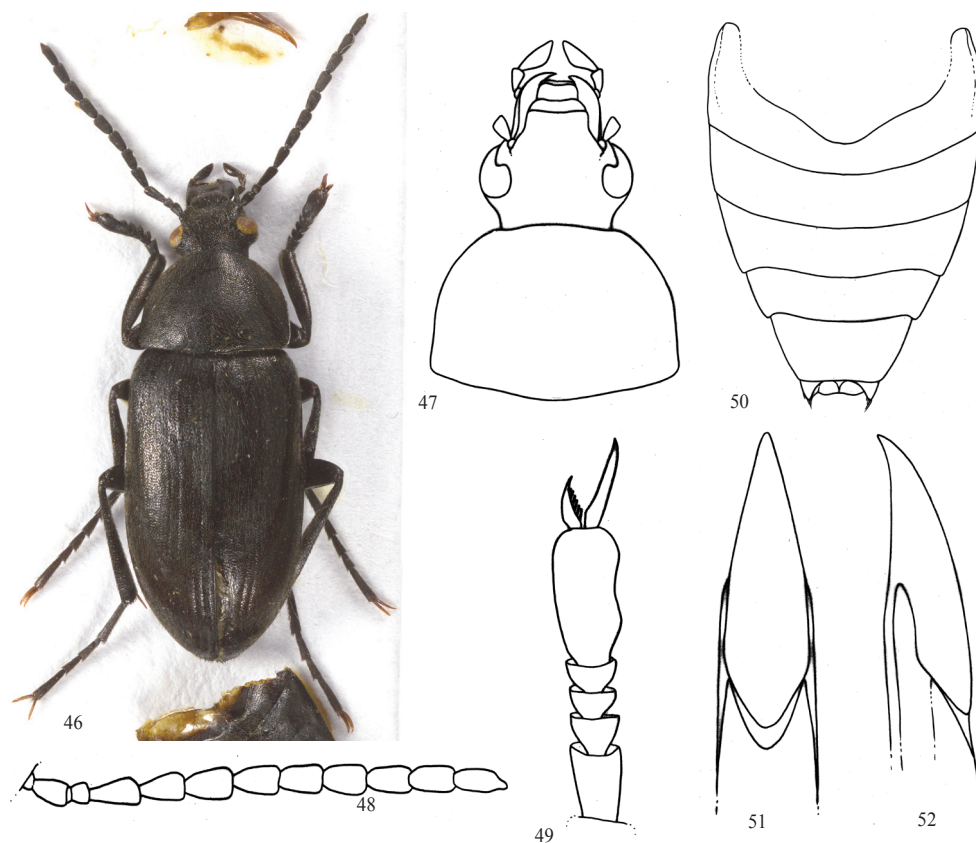
Ventral side of body black, slightly shiny, with setation and punctuation. Abdomen (Fig. 50) black with setation, punctuation and microgranulation, matte. Ultimate ventrite strongly roundly excised.

Elytron black, elongate, matter than pronotum, with dense and long, pale setation, fine microgranulation and dense punctuation, punctures small-sized. Elytral striae fine and distinct. EL 6.48 mm. Widest near half elytra length, EW 3.67 mm. EL/EW 1.77.

Scutellum small, black, triangular, with punctuation and microgranulation.

Elytral epipleura well-developed, black, regularly narrowing to ventrite 2, then leads parallel.

Legs. Black, with dark setation, microgranulation and dense punctuation, punctures very small. Tibiae relatively strong, slightly dilated anteriorly. Protarsus (Fig. 49), protarsomeres 2- 4 wide, transverse, ultimate protarsomere widened and distinctly excised on inner side. RL/WUP 1.95. RLT: 1.00 : 0.57 : 0.53 : 0.51 : 2.26 (protarsus), 1.00 : 0.46 : 0.40 : 0.33 : 0.86 (mesotarsus), 1.00 : 0.50 : 0.38 : 0.76 (metatarsus).



Figs. 46-52: *Podonta pseudoatrata* sp. nov.: 46- habitus; 47- head, pronotum and maxillary palpus; 48- antenna; 49- protarsus; 50- abdomen; 51- aedeagus, dorsal view; 52- aedeagus, lateral view.

Outer, short anterior tarsal claws with 9 visible teeth, inner long anterior tarsal claw with 6 visible teeth.

Aedeagus (Figs. 51, 52). Reddish brown, slightly shiny. Basal piece rounded laterally and distinctly narrowing dorsally. Apical piece beak-shaped laterally and dorsally. Ratio of length of apical piece to length of basal piece 1: 4.44.

**Female.** Unknown.

**Variability.** The type specimens somewhat vary in size; each character is given as its mean value, with full range in parentheses. Males (n=2). BL 10.00 mm (9.92-10.08 mm); HL 1.25 mm (1.12-1.38 mm); HW 1.84 mm (1.82-1.86 mm); OI 64.29 (60.34-68.24); PL 2.11 mm (2.06-2.15 mm); PW 3.10 mm (3.03-3.16 mm); PI 68.03 (68.02-68.04); EL 6.65 mm (6.48-6.81 mm); EW 3.69 mm (3.67-3.70 mm).

**Differential diagnosis.** *Podonta pseudoatrata* sp. nov. distinctly differs from the species *Podonta babadagiica* sp. nov., *Podonta eckerleini* Muche, 1963, *Podonta frater* Seidlitz, 1896, *Podonta murzini* sp. nov., *Podonta nigrita* (Fabricius, 1794) and *Podonta soror* Seidlitz, 1896 mainly by ultimate protarsomere distinctly excised on inner side; while *P. babadagiica*, *P. eckerleini*, *P. frater*, *P. murzini*, *P. nigrita* and *P. soror* have inner side of ultimate protarsomere more or less angularly widened. *P. pseudoatrata* is clearly different from the species *Podonta biformis* Reitter, 1898 mainly by dorsal surface of head and pronotum with denser and coarser punctuation with larger punctures; while dorsal surface of head and pronotum of *P. biformis* has sparser and shallower punctuation with smaller punctures. *P. pseudoatrata* distinctly differs from the species *Podonta atrata* Kiesenwetter, 1873 mainly by posterior angles of pronotum roundly obtuse, ultimate palpomere roundly widened on inner side; while *P. atrata* has posterior angles of pronotum roundly rectangular and ultimate palpomere angularly widened on inner side.

**Etymology.** Compound name - *pseudo-* (false) and *-minuta-* indicating the appearance resembling the species *Podonta atrata*.

**Distribution.** Syria.

### ***Podonta soror* Seidlitz, 1896**

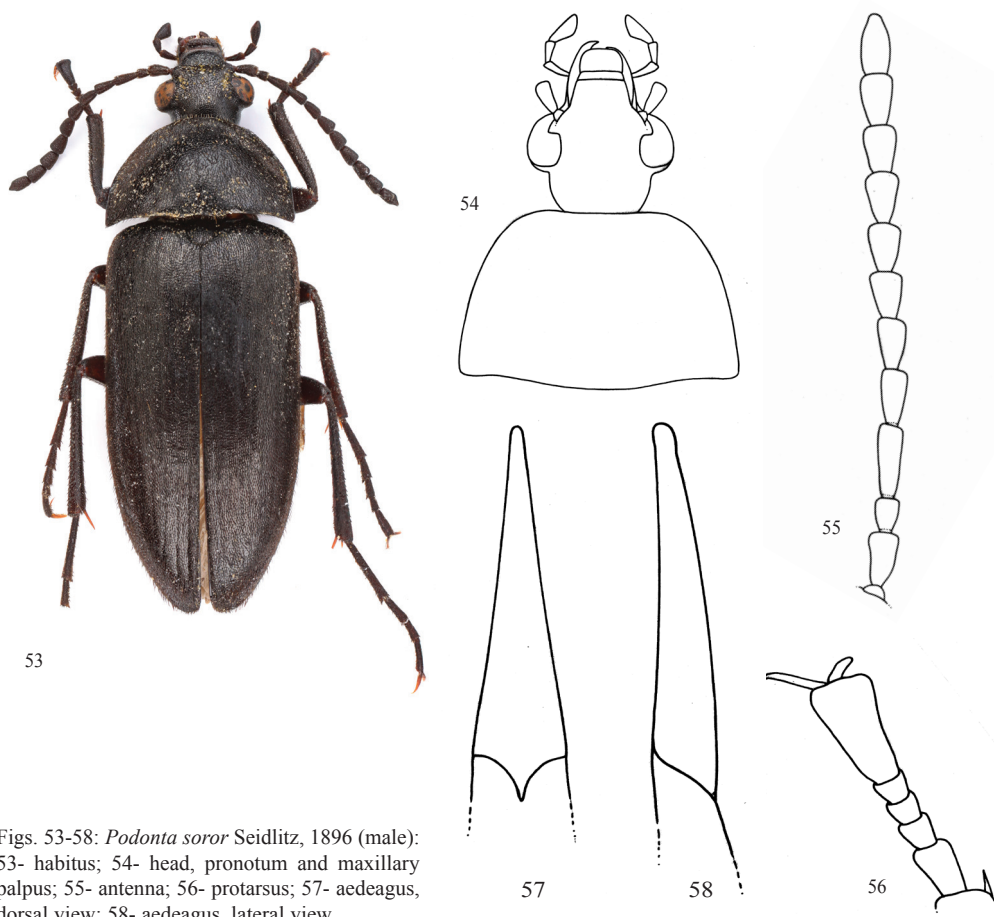
(Figs. 53-58)

*Podonta soror* Seidlitz, 1896: 189.

**New material examined.** (4 ♂♂ 11 ♀♀): wl: TR - prov. ÇANKIRI / 23 km N Çankiri, 1100m / 20.-21.6.1996 / Z. Malinka lgt. [pb], (VNPC, ZMOC); (1 ♂ 9 ♀♀): wl: same data, but P.Zahranik lgt. [pb], (PZPC, VNPC); (4 ♂♂ 5 ♀♀): wl: TR - prov. ADANA / Pozanti, 900m / 6.-9.6.1996 / Z. Malinka lgt. [pb], (VNPC, ZMOC); (5 ♂♂): wl: Tr vill. Konya / Sultan Dağları / Ladik 5.vi.1986 / Kadlec + Voříšek leg. [pb], (NMPC, VNPC); (1 ♂ 1 ♀): wl: TR - Anatol. m. / NAMRUN 1986 / S.Kadlec 14.6. [hb], (NMPC); (2 ♂♂ 5 ♀♀): wl: TR vill. Isparta / Egridir 6.6.1986 / Kadlec + Voříšek leg. [pb], (NMPC, VNPC); (2 ♂♂): wl: TR vill. Gümüşhane / Kale 1400m 25.6.1986 / Kadlec + Voříšek leg. [pb], (NMPC); (1 ♂ 5 ♀♀): wl: TR vill. Konya / Karaman 12.6.1986 / Kadlec + Voříšek

leg. [pb], (NMPC, VNPC); (1 ♂): wl: TR vill. Antalya / Bey Dağları / Termessos 9.6.86 / Kadlec + Voříšek leg. [pb], (NMPC); (1 ♂ 4 ♀♀): wl: Turkey, 10.7.83 / Cappadocia / Avanos, Bílý leg. [pb], (NMPC); (3 ♂♂ 6 ♀♀): wl: Turkey, 28.6.83 / Sultan Dagi, prov. / Konya, Bílý leg. [pb], (NMPC, VNPC).

**Redescription (based on male from Isparta in VNPC).** Habitus as in Fig. 53, body smaller, elongate, narrower, dorsal surface black, with punctuation, fine microgranulation and setation, slightly shiny, BL 8.71 mm. Widest near half elytra length; BL/EW 2.71. Head (Fig. 54) black, relatively small, narrow with sparse and long, dark setation and dense punctuation, shiny. Dark setation behind eyes short and dense. Clypeus distinctly wider than long. HL (visible part) 1.29 mm; HW 1.46 mm; OI equal to 57.98. Eyes relatively large, transverse, slightly excised, space between eyes wide, distinctly wider than diameter of one eye, slightly wider than anterior part and clypeus. Antenna (Fig. 55) black, very short, with microgranulation, short setation, and punctuation, AL 3.23 mm; AL/BL 0.37. Antennomere 2 shortest, antennomere 3 longest. Antennomeres 1-4 slightly shiny, antennomeres 5-10



Figs. 53-58: *Podonta soror* Seidlitz, 1896 (male): 53- habitus; 54- head, pronotum and maxillary palpus; 55- antenna; 56- protarsus; 57- aedeagus, dorsal view; 58- aedeagus, lateral view.

distinctly widest at apex, antennomeres 7-10 only 1.2-1.5 times longer than wide. RLA (1-11): 0.67 : 0.43 : 1.00 : 0.81 : 0.76 : 0.78 : 0.67 : 0.71 : 0.68 : 0.74 : 0.89. RL/WA (1-11): 1.93 : 1.33 : 2.65 : 2.03 : 1.75 : 1.68 : 1.44 : 1.28 : 1.30 : 1.52 : 1.96. Maxillary palpus black, matte with microgranulation, punctures and short setation. Ultimate palpomere axe-shaped, at apex straight truncate. Palpomeres 2 and 3 distinctly narrowest at base, slightly dilated anteriorly; RL/WP 2.08. Pronotum (Fig. 54) black, shiny, transverse, with dark setation and dense punctuation, punctures small-sized, interspaces between punctures wider than diameter of punctures. Border lines distinct and complete, only near anterior angles indistinct. Lateral margins finely arcuate. Anterior margin straight, posterior margin slightly bisinuate, anterior angles indistinct, rounded, posterior angles rounded and finely sharp. PL 1.57 mm; PW 2.74 mm; PI equal to 57.30. Ventral side of body black, with setation and dark punctuation. Abdomen black with setation, punctuation and microgranulation, slightly shiny. Ultimate ventrite strongly roundly excised. Elytron black, elongate, narrow, matter than pronotum, with dense and long setation, fine microgranulation and dense punctuation, punctures small-sized. Elytral striae indistinct. EL 5.85 mm. Widest near half of elytra length, EW 2.99 mm. EL/EW 1.96. Scutellum small, black, with punctures and dark setae. Elytral epipleura well-developed, black, relatively broad in basal part, narrowing to ventrite 1, then leads parallel. Legs black, with dark setation, microgranulation and dense punctuation, punctures small. Tibiae slightly dilated anteriorly. Protarsus as in Fig. 56, protarsomeres 2-4 transverse, ultimate protarsomere widened in inner side of apex. RL/WUP 1.86. RLT: 1.00 : 0.39 : 0.35 : 0.35 : 1.37 (protarsus), 1.00 : 0.76 : 0.67 : 0.56 : 1.29 (mesotarsus), 1.00 : 0.53 : 0.37 : 0.44 (metatarsus). Inner, shorter anterior tarsal claws with 3 visible teeth, outer longer anterior tarsal claw with 10 visible teeth. Aedeagus (Figs. 57, 58) pale brown, shiny. Basal piece rounded laterally and slightly narrowing dorsally. Apical piece slightly beak-shaped with rounded tip laterally, elongate, narrowly triangular dorsally. Ratio of length of apical piece to length of basal piece 1: 3.49.

**Distribution.** Syria, Turkey.

#### LIST OF THE SPECIES BELONGING TO *PODONTA NIGRITA* SPECIES GROUP

<i>Podonta atrata</i> Kiesenwetter, 1873: 15	Cyprus, Israel, Syria, Turkey
= <i>Podonta dentella</i> Muehle, 1962: 145	syn. nov.
<i>Podonta babadagiica</i> sp. nov.	Turkey
<i>Podonta biformis</i> Reitter, 1889: 374	Armenia, Iran, Iraq, Syria, Turkey.
<i>Podonta eckerleini</i> Muehle, 1963: 61	Turkey
<i>Podonta frater</i> Seidlitz, 1896: 190	Turkey
<i>Podonta murzini</i> sp. nov.	Iran, Turkey
<i>Podonta nigrata</i> (Fabricius, 1794): 447	Austria, Bosnia Herzegovina, Bulgaria, Croatia, Czech Republic, Greece, Hungary, Italia, Poland, Romania, Russia, Slovakia, Switzerland, Turkey, Ukraine, Yugoslavia, Caucasus.

*Podonta pseudoatrata* sp. nov.

Syria

*Podonta soror* Seidlitz, 1896: 189

Syria, Turkey

ACKNOWLEDGEMENTS. Sincere thanks are due to Olaf Jäger (MTDG), Katja Neven and Michael Balke (ZSMG) for the loan of type material under their care. I also thanks to Matthias Hartmann (NMEG), Jifí Hájek (NMPC), Andreas Pütz (Eisenhüttenstadt, Germany), Zdeněk Malinka (Opava, Czech Republic) and Petr Zahradník (Praha, Czech Republic) for the loan of other material. Special thanks are due to Zuzana Čadová (Liberec, Czech Republic) for excellent drawings and Stanislav Krejčík (Czech Republic) for making some digital photographs.

## REFERENCES

- CAMPBELL J. M. 1965: A revision of the genus *Charisius* (Coleoptera: Alleculidae). *The Coleopterist's Bulletin* 19: 41-56.
- CAMPBELL J. M. & MARSHALL J. D. 1964: The ocular index and its applications to the taxonomy of the Alleculidae (Coleoptera). *The Coleopterist's Bulletin* 18: 42.
- FABRICIUS J. C. 1794: *Entomologica systematica emendata et aucta, secundum classes, ordines, genera, species adjectis synonymis, locis, observationibus, descriptionibus. Tome 4.* Hafniae: C. G. Proft, [6] + 472 + [5] pp.
- KIESENWETTER E. A. H. von 1873: Revision der Cisteliden-Gattung *Podonta* Muls. *Berliner Entomologische Zeitschrift* 17: 9-22.
- MADER L. 1928: *Alleculidae*. Columns 901-913. In: WINKLER A. (ed.) 1924-1932: *Catalogus coleopterorum regionis palaearticae*. Wien: Winkler & Wagner, 1698 pp.
- MAŘAN J. 1935: De novis Alleculidarum speciebus formisque regionis palaearticae. *Sborník Entomologického Oddělení Národního Musea v Praze* (118) 13: 141-146.
- MUCHE W. H. 1962: Die *Podonta* meiner Anatolienausbeute (Coll., Alleculidae, Omophlini). *Reichenbachia* 1: 145-147.
- MUCHE W. H. 1963: Über einige von Herrn Dr. Eckerlein in Kleinasien gesammelte Omophlini (Coleoptera, Alleculidae). *Reichenbachia* 2: 61-65.
- MUCHE W. H. 1965: Neue *Podonta*-Arten (Coleoptera, Alleculidae, Omophlinae). *Reichenbachia* 6: 83-87.
- NOVÁK V. & PETTERSSON R. 2008: *Alleculinae*. Pp. 319-339. In: LÖBL I. & A. SMETANA (eds.): *Catalogue of Palaearctic Coleoptera, Vol. 5. Tenebrionoidea*. Stenstrup: Apollo Books, 670 pp.
- REITTER E. 1889: Neue Coleopteren aus Europa, den angrenzenden Ländern und Sibirien, mit Bemerkungen über bekannte Arten. *Deutsche Entomologische Zeitschrift* 1889: 369-376.
- SEIDLITZ G. C. M. von 1896: Alleculidae. Pp. 1-305. In: ERICHSON W. F. ET ALL (eds.): *Naturgeschichte der Insecten Deutschlands, I. Abt., Bd. 5, 2. Hälfte*. Berlin: Nicolaische Verlags-Buchhandlung R. Stricker, 305 pp.
- SOLIER M. 1835: Prodrome de la famille des Xystropides. *Annales de la Société Entomologique de France* 4: 229-248.

Received: 20.6.2016

Accepted: 30.6.2016

